



# Guideline for Section 11 of Ontario Regulation 22/04

## Disconnecting Unused Lines

Version 1.1

Ontario Regulation 22/04

**Electrical Distribution Safety**

Approved - October 5, 2005

Revised – October 5, 2025

**Legal Disclaimer.**

**This document contains GUIDELINES ONLY to assist members of the industry in** understanding roles and responsibilities under Ontario Regulation 22/04 - Electrical Distribution Safety under subsection 113(1) of Part VIII of the Electricity Act, 1998 S.O. 1998, c.15, sched.A. These Guidelines are intended for professional education and may be used for informational, non-commercial purposes only.

Although the information and materials are carefully prepared and are believed to be reliable and accurate, the ESA does not accept any legal responsibility for the contents herein or for any consequences, including direct or indirect liability, arising from reliance on the information or use thereof. The information set forth through the Guideline may be revised or withdrawn at any time without prior notice.

In no event shall the ESA, its employees, directors, or officers, be liable for any direct, indirect or incidental damages, injury, loss, costs or expenses related to reliance on the information provided or its use, however caused, including but not limited to, special or consequential damages, lost revenue, business interruption, lost or damaged data or any other commercial or economic loss howsoever caused irrespective of whether ESA is advised of the possibility of such damages, injury, loss, cost or expense. ESA does not provide any legal advice and users of the Guideline should consult with their own lawyer for legal advice.

The guidelines contained herein do not have the force of law. In the event of a conflict between these guidelines and any applicable legislation or regulation which may apply, the relevant law prevails.



## General

### 1.1 Purpose

This Guideline has been prepared to provide guidance to distributors on how to comply with section 11 Disconnection of Unused Lines of Ontario Regulation 22/04 *Electrical Distribution Safety*.

This Guideline along with the Regulation and other appropriate standards form the basis on which the ESA will assess the safety of the electrical installations within the Province of Ontario.

### 1.2 Definitions

These definitions are provided solely for the application of Ontario Regulation 22/04 and should not be used in the interpretation or application of other regulations.

1.2.1 “**Effectively Grounded**” (see Regulation 22/04 – Section 1).

1.2.2 “**Ground**” means effectively grounded or in the case of underground distribution lines may mean cut-off such that they cannot be inadvertently energized.

1.2.3 “**Prolonged Period of Time**” means twelve months from when the distribution line has been deemed “unused” by the distributor.

1.2.4 “**Unused Lines**” means lines that are not required as an integral part of the distribution system.

### 1.3 Scope

1.3.1 What is the timeline for complying with section 11?

Section 11 came into force on November 11, 2004. This means that all distribution systems have been required to comply with section 11 of the Regulation since November 11, 2004. This timeline applies only to lines that have been declared *unused lines* since November 11, 2004.



1.3.2 What parts of the distribution system does section 11 cover?  
Section 11 covers all distribution lines of 750 volts or more, including both overhead and underground lines.

1.3.3 What does section 11 require?  
Section 11 requires that all distribution lines of 750 volts or more that are *unused lines* for a *prolonged period of time* be de-energized, disconnected and *grounded*.

1.3.4 Does this include 'back-up' and 'emergency' lines?  
No, back-up and emergency lines are exempt from section 11.

Section 11(3) states that:

“A distributor is not required to comply with subsection (1) where the lines, although *unused lines*, act as back-up or emergency lines.”

1.3.5 What options are available if it does not make sense to disconnect and *ground*?

If a distributor feels that it cannot or it does not make sense to disconnect and *ground unused lines* then it can follow section 11(4) of the Regulation. This allows the distributor to provide ESA with a report stating that disconnecting and *grounding* are not practical under the circumstances, and there is no undue danger to the safety of any persons if the lines are not disconnected and *grounded*. A professional engineer must sign the report. (A sample report is illustrated in Appendix A.)

1.3.6 What information should this report (see 1.3.5) include?

Some of the information to be included in the report is as follows:

- 1.3.6.1 The location of the unused lines;
- 1.3.6.2 The reason why it is not practical to remove or disconnect and *ground* the lines;
- 1.3.6.3 Professional engineer's signature. (Includes a holder of a licence, a limited licence or a temporary licence issued under the Professional Engineers Act)



## 2.0 How to Comply with Section 11

### 2.1 How do I disconnect and *ground*?

2.1.1 There are too many ways to disconnect and *ground* to list all of the methods here. Instead, a general principle statement has been prepared to guide the distributors. Each distributor should ensure that their process measures up to the principle statement below.

**”Grounding (or cut-off for underground cable) must be sufficient to provide permanent protection to prevent the building up or transference of any voltages or currents that may result in any undue hazards to persons or equipment.”**

2.1.2 Below are some situations that should be considered when a line might become inadvertently energized.

2.1.2.1 Induction

2.1.2.2 Capacitive coupling

2.1.2.3 Inadvertent connection or fault from the adjacent energized system

2.1.3 What process should be followed to comply with Section 11?

The following is a high level overview of the process to comply with Section 11:

2.1.3.1 Identify *unused lines*

2.1.3.2 Recover; or

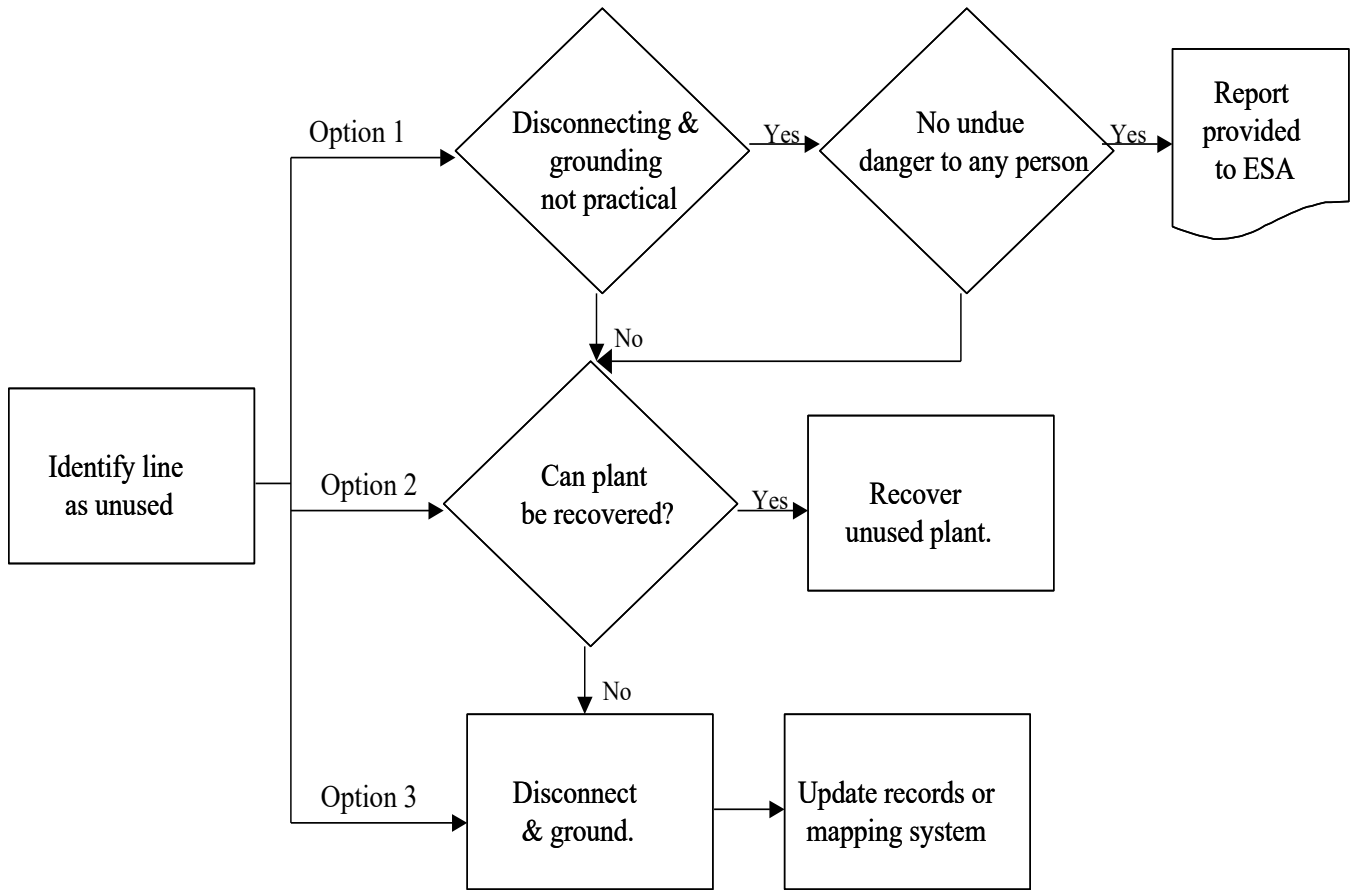
2.1.3.3 Disconnect and *ground*; or

2.1.3.4 Provide a report to ESA signed by a professional engineer as per section 11(4).

See the following diagram for more information.



Diagram 2.1.3



2.2 Why should accurate records of underground *unused lines* be maintained?

Detailed mapping information of all facilities including abandoned or sold facilities is important for the safety of workers.

As more underground lines become unused and abandoned, there is a higher probability that excavators will come across those lines. By accurately identifying abandoned lines on cable locate requests the chance of the excavator finding the line and not being able to identify it as live or abandoned will be minimized, resulting in fewer work stoppages, less need to call the Distributor for identification of the line, and fewer power outages due to line misidentification.



- 2.3 Are “*unused lines*” the same as “abandoned lines”?  
Yes, once a line is declared unused by a Distributor, it is treated as abandoned plant.
- 2.4 Are temporary ground methods acceptable to disconnect and *ground unused lines*?  
No.
- 2.5 How should customer-owned equipment that has been abandoned be treated?  
Customer-owned plant is not part of the Distributor’s distribution system and is subject to the Ontario Electrical Safety Code. If a distributor is concerned that abandoned customer-owned plant has been left in a condition hazardous to the public, it should make the location safe and contact the Electrical Safety Authority by calling 1-877-ESA-SAFE (1-877-372-7233) or emailing [ESA.Cambridge@electricalsafety.on.ca](mailto:ESA.Cambridge@electricalsafety.on.ca).
- 2.6 Should lines built for future use be considered *unused lines* if they will not be put into service in the next twelve months?  
These lines can be considered an integral part of the distribution system. However, they should be maintained in a condition that presents no undue hazard to the public until the lines are put into service.
- 2.7 How can *unused lines* be identified?  
Lines can be identified through activities such as cable locates, trouble calls, maintenance, service calls, planned capital activities and third party equipment verification.



**3.0 What documentation is required**

- 3.1 Distributors shall have a documented process that ensures that the Regulation is complied with.
- 3.2 What kind of records should be kept?  
Records should be available to support the Distributor's declaration of compliance. These records may include maps with abandoned facilities indicated, records maintained as part of the Construction Verification Program, and signed certificates sent to ESA identifying lines that are *unused lines* but not disconnected and grounded.
- 3.3 In the event that a Distributor does not locate Distributor-owned equipment in specific locations (e.g. within the footprint of a building), the records shall include this information.

**Appendix A**

<b>UNUSED LINES CERTIFICATE</b> Report to be filled out for unused lines, excepting those used for backup or emergency purposes, that is not disconnected and grounded as per Section 11 of Ontario Regulation 22/04		
Date:	Please complete as applicable	
1. Description of Location:	Xxxx Street, from xxxxx to xxxxxx	
2. Feeder Designation:	XXMx	
3. Description of Line:	xx kV Circuit	
4. What is the reason for the line being unused?		
5. Comment on why there is no undue danger to the safety of any person.		
<b>This is to certify that:</b> <ul style="list-style-type: none"> <li>- <b>Disconnecting and grounding the above lines is not practical in the circumstances and;</b></li> <li>- <b>No undue danger to the safety of any person will be caused if the lines are not disconnected and grounded.</b></li> </ul>		
<b>Certified By: (Professional Engineer – Licence Holder)</b>		
Title:		
<b>This form must be sent to the ESA Utility Regulation Department.</b>		
Person Form Sent To:		
Date:		